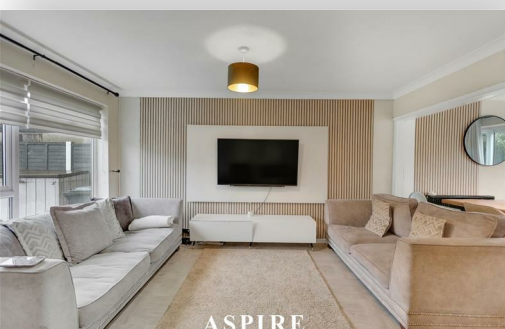


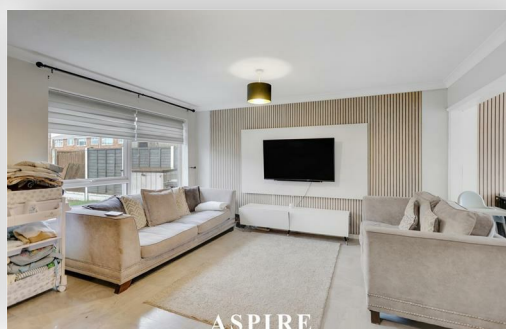
**To arrange a viewing contact us
today on 01268 777400**



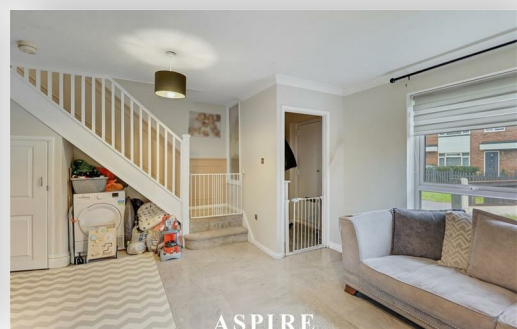
ASPIRE



ASPIRE



ASPIRE



ASPIRE

Ambleside Walk, Canvey Island Asking price £300,000

Aspire are pleased to present this spacious three-bedroom end-terrace home on Ambleside Walk, offered with no onward chain. The property features open-plan living, a larger-than-average garden, and a garage, and is ready to move straight into.

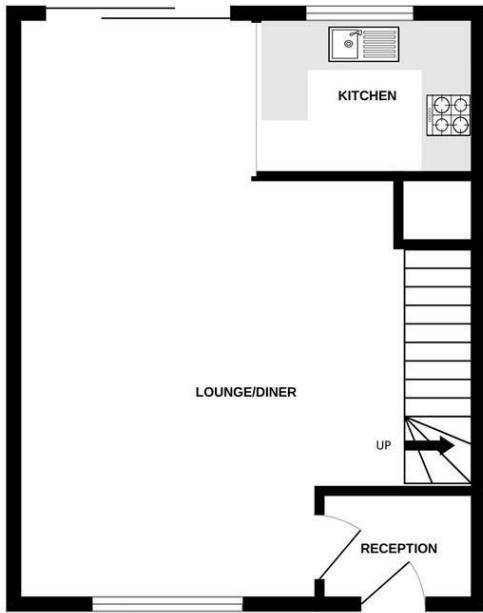
Aspire are pleased to present this well-presented three-bedroom end-terrace home, situated in the popular Ambleside Walk and offered to the market with no onward chain, making it an ideal purchase for first-time buyers, families, or investors alike.

The property offers spacious accommodation throughout and is ready to move straight into. To the ground floor, a large open-plan living area provides a bright and versatile space, ideal for modern family living and entertaining.

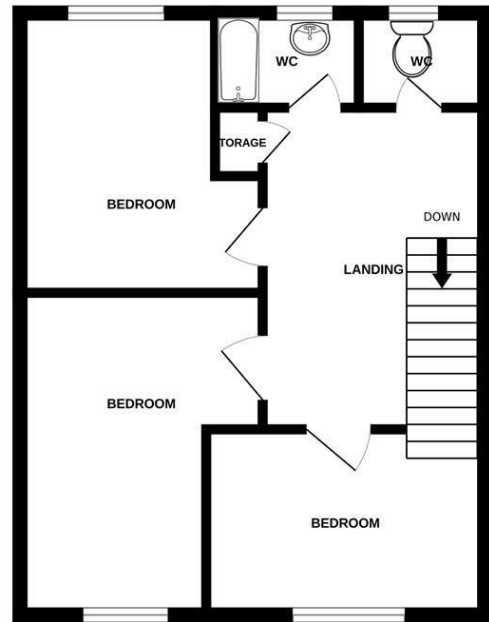
Upstairs, the home comprises three well-proportioned bedrooms alongside a family bathroom. Externally, the property benefits from a larger-than-average rear garden, offering excellent outdoor space, as well as the added advantage of a garage.

With its end-terrace position, generous layout, and chain-free status, this is a fantastic opportunity not to be missed. Early viewing is highly recommended.

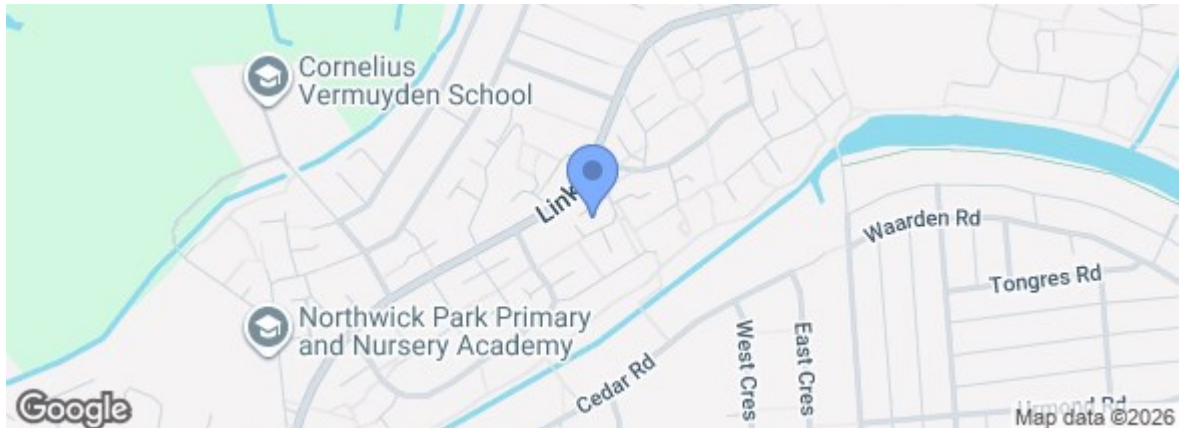
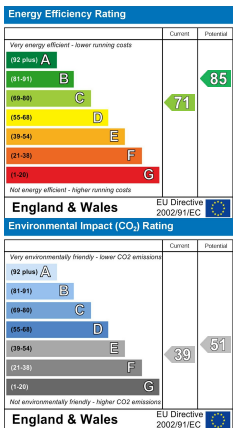
GROUND FLOOR



1ST FLOOR



Whilst every attempt has been made to ensure the accuracy of the floorplan contained here, measurements of doors, windows, rooms and any other items are approximate and no responsibility is taken for any error, omission or mis-statement. This plan is for illustrative purposes only and should be used as such by any prospective purchaser. The services, systems and appliances shown have not been tested and no guarantee as to their operability or efficiency can be given.
Made with Metropix ©2026



Under the Property Misdescriptions Act 1991 we make every effort to ensure our sales details are accurate but they are a general outline and do not constitute any part of an offer or contract. Any services, equipment and fittings have not been tested and no warranty can be given as to their condition. We strongly recommend that all the information provided be verified by your advisors and in particular, measurements required for a specific purpose such as fitted furniture or carpets. Please tell us if you have any problems and members of our branches will help either over the phone or in person. A copy of our complaints procedure is available on request. The details are issued on the strict understanding that any negotiations in respect of the property named herein are conducted through Aspire Estate Agents.